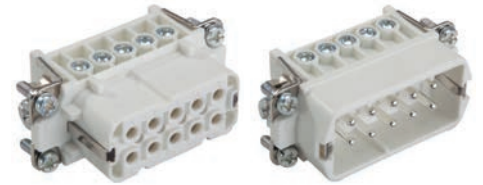




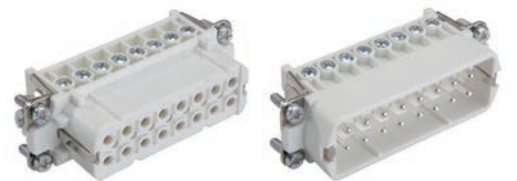
EPIC® H-A 10

H-A inserts with screw termination up to 2.5 mm² wire cross section



EPIC® H-A 16

H-A inserts with screw termination up to 2.5 mm² wire cross section



Info

- Slim standard insert, easy to connect by screw
- Universal for current and voltage transmission



Info

- Slim standard insert, easy to connect by screw
- Universal for current and voltage transmission

Suitable housing

EPIC® H-A 10

- EPIC® H-A 10 Housings

EPIC® H-A 16

- EPIC® H-A 16 Housings
- Refer to Selection Table A10 to select the required inserts and housings

Similar products

- Further products with higher numbering in the internet. (H-A 32, H-A 48)

Benefits

- Slim connector insert for standard application
- Easy to service screw connection
- Universal for current and voltage transmission

Application range

- Machine and equipment manufacturing
- Control engineering

Suitable tools

- Kraftform® adjustable torque screwdriver/ Kraftform Kompakt® Set refer to page 1060

Technical data

Classification ETIM 5/6
ETIM 5.0/6.0 Class-ID: EC000438
ETIM 5.0/6.0 Class-Description:
Contact insert for industrial connectors

Rated voltage (V)
IEC: 250 V
UL: 600 V
CSA: 600 V

Rated impulse voltage
4 kV

Rated current (A)
IEC: 16 A
UL: 14 A
CSA: 16 A

Pollution degree
3

Contact resistance
1.5 - 4 mohm

Contacts
Copper alloy, hard silver-plated

Number of contacts
EPIC® H-A 10
10 + PE
EPIC® H-A 16
16 + PE

Termination methods
Screw termination: 0.5 - 2.5 mm²
(2.5 mm² with conductor end sleeves depending on the crimping profile)

Stripping length (mm)
8

Cycle of mechanical operation
100

VDE-tested
Certified production control:
VDE-REG. no.: B437
UL-tested:
UL File Number: E75770

Temperature range
-40°C to +100°C,
short-term up to +125°C

Article number	Article description	Contact type	Wire protection	Number of operating contacts	Pieces / PU
H-A 10 screw termination					
10440100	H-A 10 SS	male	yes	1 - 10	5
10441100	H-A 10 BS	female	yes	1 - 10	5
10440000	H-A 10 SS	male		1 - 10	5
10441000	H-A 10 BS	female		1 - 10	5
H-A 16 screw termination					
10530000	H-A 16 SS	male	yes	1 - 16	5
10531000	H-A 16 BS	female	yes	1 - 16	5
10532000	H-A 16 SS	male		1 - 16	5
10533000	H-A 16 BS	female		1 - 16	5

Photographs and graphics are not to scale and do not represent detailed images of the respective products.

Similar products

- Further products with higher numbering in the internet. (H-A 32, H-A 48)