



Info

- For reliable signal transmission in harsh environmental conditions
- Mechanically robust spring contacts



Info

- For reliable signal transmission in harsh environmental conditions
- Mechanically robust spring contacts

Suitable housing

- EPIC® H-A 10 Housings
- Refer to Selection Table A10 to select the required inserts and housings

Benefits

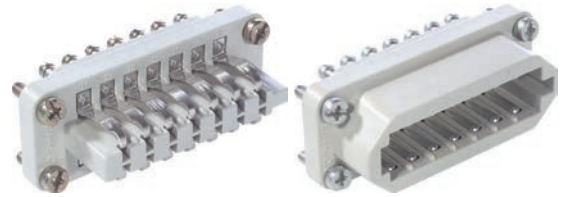
- Good contact due to the strong contact springs.
- The proven STA inserts with spring contacts

Application range

- Control systems
- Rack technology
- Electronic laboratory

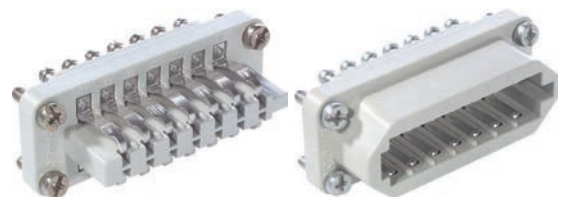
EPIC® STA 14 Screw termination

The proven STA inserts with spring contacts



EPIC® STA 14 Solder termination

The proven STA inserts with spring contacts



Technical data

- Classification ETIM 5/6**
ETIM 5.0/6.0 Class-ID: EC000438
ETIM 5.0/6.0 Class-Description:
Contact insert for industrial connectors
- Rated voltage (V)**
IEC: 24 V AC, 60 V DC
UL: 48 V
CSA: 48 V
- Rated current (A)**
IEC: 7.5 A
UL: 7.5 A
CSA: 7.5 A
- Pollution degree**
2
- Contact resistance**
< 3 mOhm
- Contacts**
Copper alloy, tinned

- Number of contacts**
14
- Termination methods**
EPIC® STA 14 Screw termination
Screw termination: 0.5 - 1.5 mm²
EPIC® STA 14 Solder termination
Solder termination: up to 1.5 mm²
Stripping length (mm)
5
- Cycle of mechanical operation**
100
- VDE-tested**
UL-tested:
UL File Number: E75770
- Temperature range**
-40°C up to +80°C

Article number	Article description	Contact type	Number of operating contacts	Pieces / PU
STA 14 screw termination				
10491100	STA 14 SS	male	1 - 14	5
10493100	STA 14 FS	Spring	1 - 14	5
STA 14 solder termination				
10490200	STA 14 SL	male	1 - 14	5
10492200	STA 14 FL	Spring	1 - 14	5

Photographs and graphics are not to scale and do not represent detailed images of the respective products.