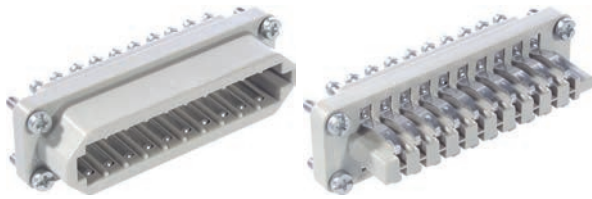




## EPIC® STA 20 Screw termination

The proven STA inserts with spring contacts

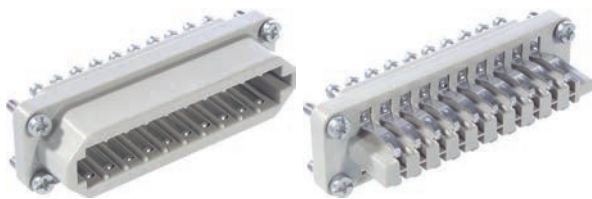


### Info

- For reliable signal transmission in harsh environmental conditions
- Mechanically robust spring contacts

## EPIC® STA 20 Solder termination

The proven STA inserts with spring contacts



### Info

- For reliable signal transmission in harsh environmental conditions
- Mechanically robust spring contacts

### Suitable housing

- EPIC® H-A 16 Housings
- Refer to Selection Table A10 to select the required inserts and housings

### Benefits

- Good contact due to the strong contact springs.
- The proven STA inserts with spring contacts

### Application range

- Control systems
- Rack technology
- Electronic laboratory

### Technical data

	<b>Classification ETIM 5/6</b> ETIM 5.0/6.0 Class-ID: EC000438 ETIM 5.0/6.0 Class-Description: Contact insert for industrial connectors
	<b>Rated voltage (V)</b> IEC: 24 V AC, 60 V DC UL: 48 V CSA: 48 V
	<b>Rated current (A)</b> IEC: 7 A UL: 7 A CSA: 7 A
	<b>Pollution degree</b> 2
	<b>Contact resistance</b> < 3 mOhm
	<b>Contacts</b> Copper alloy, tinned

	<b>Number of contacts</b> 20
	<b>Termination methods</b> <b>EPIC® STA 20 Screw termination</b> Screw termination: 0.5 - 1.5 mm <sup>2</sup> <b>EPIC® STA 20 Solder termination</b> Solder termination: up to 1.5 mm <sup>2</sup> <b>Stripping length (mm)</b> 5
	<b>Cycle of mechanical operation</b> 100
	<b>VDE-tested</b> UL-tested: UL File Number: E75770
	<b>Temperature range</b> -40°C up to +80°C

Article number	Article description	Contact type	Number of operating contacts	Pieces / PU
<b>STA 20 screw termination</b>				
10501100	STA 20 SS	male	1 - 20	5
10503100	STA 20 FS	Spring	1 - 20	5
<b>STA 20 solder termination</b>				
10500200	STA 20 SL	male	1 - 20	5
10502200	STA 20 FL	Spring	1 - 20	5

Photographs and graphics are not to scale and do not represent detailed images of the respective products.