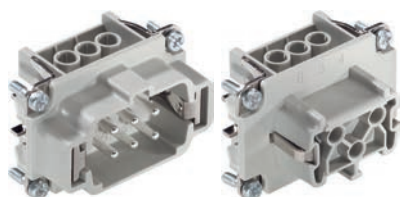




### EPIC® H-BE 6 Screw termination

The proven standard inserts for easy assembly

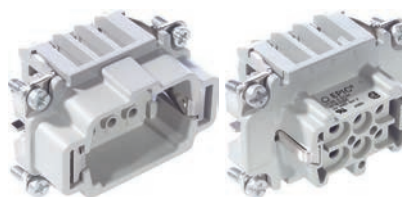


**i Info**

- Proven screw for easy installation
- Screw, crimp, cage clamp and Push-In version - freely combinable
- Railway applications

### EPIC® H-BE 6 Crimp termination

The proven standard inserts for easy assembly

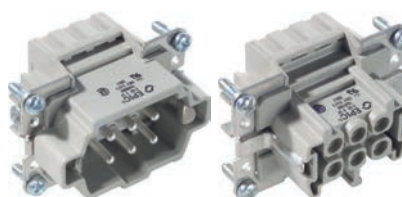


**i Info**

- For wire connection up to 4 mm<sup>2</sup>
- Screw, crimp, cage clamp and Push-In version - freely combinable

### EPIC® H-BE 6 Cage clamp

The proven standard inserts for easy assembly



**i Info**

- Vibration resistant and fast wire connection
- Screw, crimp, cage clamp and Push-In version - freely combinable

### EPIC® H-BE 6 Push-In termination

The proven standard inserts for easy assembly



**i Info**

- Push-In version - fast and easy tool free connection technology
- Screw, crimp, cage clamp and Push-In version - freely combinable
- Multifunctional insert for versatile applications

#### Suitable housing

- EPIC® ULTRA H-B 6
- EPIC® H-B 6 Housings
- Refer to Selection Table A 10 to select the required inserts and Housings
- EPIC® QUICK & EASY Mounting system

#### Suitable contacts:

- EPIC® H-BE 6 Crimp termination**
- EPIC® H-BE 2.5 machined contacts Page 590

#### Benefits

- Standard inserts with screw, crimp cage clamp and Push-In termination
- The EPIC® H-BE series is suitable for applications that require a reliable connection when working with high voltages and currents

#### EPIC® H-BE 6 Screw termination

- Railway applications
  - Fire protection on railway vehicles: Test according EN 45545-2. Requirement sets R22 and R23. Hazard level HL 1, HL2 and HL4
- UL tested for application in control cabinets according UL 508 / UL 2237

#### EPIC® H-BE 6 Push-In termination

- Insertion of cores with end sleeves in Push-In inserts gives mounting safety and time saving without any tools
- Easy dismantling and insertion of wires by pushing the orange button
- Test socket for standard 2mm test tip for easy testing of Push-In inserts
- Railway applications
  - Fire protection on railway vehicles: Test according EN 45545-2. Requirement sets R22 and R23. Hazard level HL 1, HL2 and HL4

#### Application range

- Mechanical engineering
- Light & sound technology
- Plastics industry

#### EPIC® H-BE 6 Push-In termination

#### EPIC® H-BE 6 Screw termination


- Railway applications / vehicle construction


#### Suitable tools

#### EPIC® H-BE 6 Screw termination


- Kraftform® adjustable torque screwdriver/ Kraftform Kompakt® Set refer to page 1060


**Technical data**


 **Classification ETIM 5/6**  
ETIM 5.0/6.0 Class-ID: EC000438  
ETIM 5.0/6.0 Class-Description:  
Contact insert for industrial connectors

 **Rated voltage (V)**  
IEC: 500 VUL: 600 VCSA: 600 V


**Rated impulse voltage**  
6 kV


 **Rated current (A)**  
**EPIC® H-BE 6 Screw termination**  
**EPIC® H-BE 6 Crimp termination**  
**EPIC® H-BE 6 Cage clamp**  
IEC: 16 A  
UL: 16 A  
CSA: 16 A  
**EPIC® H-BE 6 Push-In termination**  
IEC: 16 A  
UL: 13 A  
CSA: 13 A


 **Pollution degree**  
3

 **Flammability**  
**EPIC® H-BE 6 Screw termination**  
**EPIC® H-BE 6 Crimp termination**  
**EPIC® H-BE 6 Push-In termination**  
UL94 V-0  
**EPIC® H-BE 6 Cage clamp**  
UL94 V-2


**Contact resistance**  
**EPIC® H-BE 6 Screw termination**  
< 2 mOhm  
**EPIC® H-BE 6 Crimp termination**  
< 2 mOhm  
**EPIC® H-BE 6 Cage clamp**  
1.5 - 4 mohm  
**EPIC® H-BE 6 Push-In termination**  
< 2 mOhm

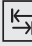
 **Contacts**  
**EPIC® H-BE 6 Screw termination**  
Copper alloy, hard silver-plated  
**EPIC® H-BE 6 Crimp termination**  
Copper alloy, hard silver/gold-plated  
**EPIC® H-BE 6 Cage clamp**  
Copper alloy, hard silver-plated  
**EPIC® H-BE 6 Push-In termination**  
Copper alloy, hard silver-plated


 **Number of contacts**  
6 + PE


 **Termination methods**  
**EPIC® H-BE 6 Screw termination**  
Screw termination: 0.5 - 2.5 mm<sup>2</sup>  
**EPIC® H-BE 6 Crimp termination**  
Crimp termination: 0.5 - 4.0 mm<sup>2</sup>  
**EPIC® H-BE 6 Cage clamp**  
Cage clamp termination: 0.5 - 2.5 mm<sup>2</sup>  
**EPIC® H-BE 6 Push-In termination**  
Push-In termination: 0.14 - 2.5mm<sup>2</sup>

**Stripping length (mm)**  
**EPIC® H-BE 6 Screw termination**  
8  
**EPIC® H-BE 6 Cage clamp**  
7  
**EPIC® H-BE 6 Push-In termination**  
10

 **Material**  
**EPIC® H-BE 6 Screw termination**  
PC, polycarbonate  
**EPIC® H-BE 6 Crimp termination**  
PC, polycarbonate  
**EPIC® H-BE 6 Push-In termination**  
PA Polyamid

 **Cycle of mechanical operation**  
**EPIC® H-BE 6 Screw termination**  
500  
**EPIC® H-BE 6 Crimp termination**  
100  
**EPIC® H-BE 6 Cage clamp**  
100  
**EPIC® H-BE 6 Push-In termination**  
500

 **Certifications**  
**EPIC® H-BE 6 Screw termination**  
Certified production control:  
VDE-REG. no.: B437  
UL-tested:  
UL File Number: E75770 and E483837  
**EPIC® H-BE 6 Crimp termination**  
Certified production control:  
VDE-REG. no.: B437  
UL-tested:  
UL File Number: E75770  
**EPIC® H-BE 6 Cage clamp**  
UL-tested:  
UL File Number: E75770  
**EPIC® H-BE 6 Push-In termination**  
UL-tested:  
UL File Number: E75770

 **Temperature range**  
-40°C to +100°C,  
short-term up to +125°C

Article number	Article description	Contact type	Wire protection	Number of operating contacts	Pieces / PU
<b>H-BE 6 screw termination</b>					
10190000	EPIC® H-BE 6 SS	male	yes	1 - 6	10
10191000	EPIC® H-BE 6 BS	female	yes	1 - 6	10
10190100	EPIC® H-BE 6 SS	male		1 - 6	10
10191100	EPIC® H-BE 6 BS	female		1 - 6	10
<b>H-BE 6 crimp termination</b>					
10180000	EPIC® H-BE 6 SCM	male		1 - 6	10
10181000	EPIC® H-BE 6 BCM	female		1 - 6	10
<b>H-BE 6 cage clamp termination</b>					
10400000	EPIC® H-BE 6 SF	male	yes	1 - 6	10
10401000	EPIC® H-BE 6 BF	female	yes	1 - 6	10
<b>H-BE 6 Push-In termination</b>					
44423200	EPIC® H-BE 6 SP	male	yes	1 - 6	10
44423201	EPIC® H-BE 6 BP	female	yes	1 - 6	10

Photographs and graphics are not to scale and do not represent detailed images of the respective products.