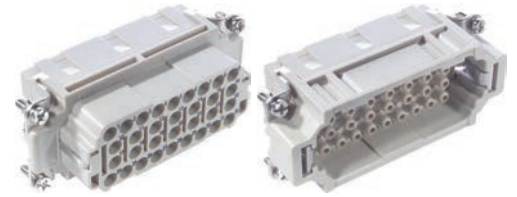




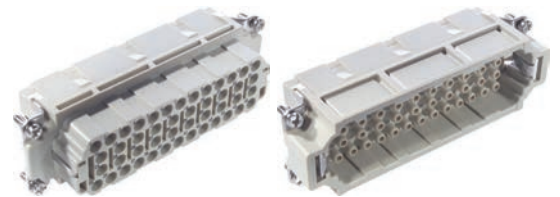
### EPIC® H-EE 32

H-EE inserts with high contact density based on the proven H-BE series.



### EPIC® H-EE 46

H-EE inserts with high contact density based on the proven H-BE series.



**Info**

- Inserts with high contact density for medium power
- Also as EPIC® H-EE 64 available



**Info**

- Inserts with high contact density for medium power
- Also as EPIC® H-EE 92 available

**Suitable housing**

**EPIC® H-EE 32**

- EPIC® ULTRA H-B 16
- EPIC® H-B 16 Housings
- EPIC® QUICK & EASY Mounting system
- EPIC® H-BE 2.5 machined contact

**EPIC® H-EE 46**

- EPIC® ULTRA H-B 24
- EPIC® H-B 24 Housings
- EPIC® QUICK & EASY Mounting system
- Refer to Selection Table A10 to select the required inserts and housings

**Suitable contacts:**

- EPIC® H-BE 2.5 machined contacts  
Page 590

**Similar products**

- Further products with higher numbering in the internet. (H-EE 64, H-EE 92)

**Benefits**

- The H-EE inserts with machined contacts for a high number of pins in very tight spaces.
- For assembly in H-B housing

**Application range**

- Mechanical engineering
- Plant engineering
- Appliance and apparatus construction

Technical data	
	<b>Classification ETIM 5/6</b> ETIM 5.0/6.0 Class-ID: EC000438 ETIM 5.0/6.0 Class-Description: Contact insert for industrial connectors
	<b>Rated voltage (V)</b> IEC: 500 VUL: 600 VCSA: 600 V
	<b>Rated impulse voltage</b> 6 kV
	<b>Rated current (A)</b> IEC: 16 A UL: 16 A CSA: 16 A
	<b>Pollution degree</b> 3
	<b>Contact resistance</b> < 2 mOhm
	<b>Contacts</b> Copper alloy, hard silver /gold-plated
	<b>Number of contacts</b> <b>EPIC® H-EE 32</b> 32 + PE <b>EPIC® H-EE 46</b> 46 + PE
	<b>Termination methods</b> Crimp termination: 0.5 - 4.0 mm <sup>2</sup>
	<b>Cycle of mechanical operation</b> 100
	<b>VDE-tested</b> UL-tested: UL File Number: E75770
	<b>Temperature range</b> -40°C to +100°C, short-term up to +125°C

Article number	Article description	Contact type	Article designation	Number of operating contacts	Pieces / PU
<b>H-EE 32 crimp termination</b>					
10184400	H-EE 32 SC	male	machined	1 - 32	5
10185400	H-EE 32 BC	female	machined	1 - 32	5
<b>H-EE 46 crimp termination</b>					
10186400	H-EE 46 SC	male	machined	1 - 46	5
10187400	H-EE 46 BC	female	machined	1 - 46	5

Photographs and graphics are not to scale and do not represent detailed images of the respective products.

**Similar products**

- Further products with higher numbering in the internet. (H-EE 64, H-EE 92)