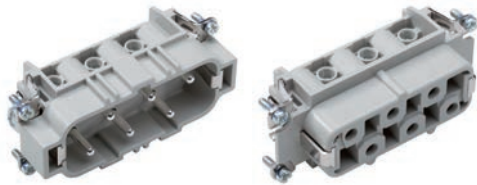




EPIC® H-BS 6

Inserts for high currents.

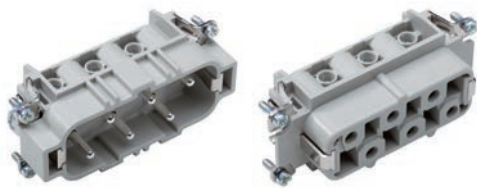


Info

- Standard insert for currents up to 35A
- Railway applications

EPIC® H-BS 12

Inserts for high currents.



Info

- Standard insert for currents up to 35A
- Railway applications

Suitable housing

EPIC® H-BS 6

- EPIC® ULTRA H-B 16
- EPIC® H-B 16 Housings
- EPIC® QUICK & EASY Mounting system

EPIC® H-BS 12

- EPIC® H-B 32 Housings
- Refer to Selection Table A10 to select the required inserts and housings

Benefits

EPIC® H-BS 6

- High rating for currents up to 35 A
- Screw termination up to a conductor cross section of 6 mm²
- Railway applications
 - Fire protection on railway vehicles: Test according to EN 45545-2. Requirement sets R22 and R23. Hazard level HL1, HL2 and HL4

EPIC® H-BS 12

- High rating for currents up to 35 A
- Screw termination up to a conductor cross section of 6 mm²
- Two H-BS 6 inserts with different contact-numbering for one housing.

Application range

EPIC® H-BS 6

- Railway applications / vehicle construction
- Plant engineering
- Mechanical engineering
- Drive systems

EPIC® H-BS 12

- Plant engineering
- Mechanical engineering
- Drive systems

Technical data

	Classification ETIM 5/6 ETIM 5.0/6.0 Class-ID: EC000438 ETIM 5.0/6.0 Class-Description: Contact insert for industrial connectors		Number of contacts EPIC® H-BS 6 6 + PE EPIC® H-BS 12 12 + PE
	Rated voltage (V) IEC: 500 VUL: 600 VCSA: 600 V Conductor - conductor: 690 V		Termination methods Screw termination: 0.5 - 6 mm ²
	Rated impulse voltage 6 kV		Stripping length (mm) 8
	Rated current (A) IEC: 35 A UL: 35 A CSA: 35 A		Cycle of mechanical operation 100
	Pollution degree 3		VDE-tested Certified production control: VDE-REG. no.: B437 UL-tested: UL File Number: E75770
	Contact resistance < 2 mOhm		Temperature range -40°C to +100°C, short-term up to +125°C
	Contacts Copper alloy, hard silver-plated		

Suitable tools

- Kraftform® adjustable torque screwdriver/
Kraftform Kompakt® Set refer to
page 1060

Article number	Article description	Contact type	Wire protection	Number of operating contacts	Pieces / PU
H-BS 6 screw termination					
10170000	H-BS 6 SS	male	yes	1 - 6	5
10171000	H-BS 6 BS	female	yes	1 - 6	5
H-BS 12 screw termination					
10170600	H-BS 6 SS 7-12	male	yes	7 - 12	5
10171600	H-BS 6 BS 7-12	female	yes	7 - 12	5

Photographs and graphics are not to scale and do not represent detailed images of the respective products.