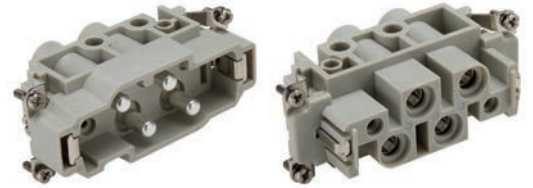




**EPIC® Power K 4/0**

Combination insert Power



**EPIC® Power K 4/2**

Combination insert Power and Control



**Info**

- Combination insert Power



**Info**

- Combination insert Power and Control

**Suitable housing**

- EPIC® ULTRA H-B 16
- EPIC® H-B 16 Housings
- EPIC® QUICK & EASY Mounting system

**Benefits**

**EPIC® Power K 4/0**

- High power in one connector insert
- Best in combination with ÖLFLEX® SERVO

**EPIC® Power K 4/2**

- Power and control in one connector insert
- Best in combination with ÖLFLEX® SERVO

**Application range**

- Mechanical engineering
- Renewable energy
- Control engineering

**Technical data**

<p> <b>Classification ETIM 5/6</b> ETIM 5.0/6.0 Class-ID: EC000438 ETIM 5.0/6.0 Class-Description: Contact insert for industrial connectors</p> <p> <b>Rated voltage (V)</b> <b>EPIC® Power K 4/0</b> 830 V Power <b>EPIC® Power K 4/2</b> 830 V Power 400 V Control</p> <p><b>Rated impulse voltage</b> 8 kV</p> <p> <b>Rated current (A)</b> <b>EPIC® Power K 4/0</b> 80 A Power <b>EPIC® Power K 4/2</b> 80 A Power 16 A Control</p> <p> <b>Pollution degree</b> 3</p> <p> <b>Flammability</b> <b>EPIC® Power K 4/0</b> UL94 V-0</p>	<p><b>Contact resistance</b> &lt; 5 mOhm</p> <p> <b>Number of contacts</b> <b>EPIC® Power K 4/0</b> 4 + PE <b>EPIC® Power K 4/2</b> 4 + 2 + PE</p> <p> <b>Termination methods</b> Screw termination: 1.5 - 16.0 mm<sup>2</sup></p> <p><b>Stripping length (mm)</b> 16 6</p> <p> <b>Material</b> PC, polycarbonate</p> <p> <b>Cycle of mechanical operation</b> 500</p> <p> <b>Certifications</b> UL-tested: UL File Number: E75770</p> <p> <b>Temperature range</b> -40°C to +125°C</p>
---	---

Article number	Article description	Contact type	Number of operating contacts	Pieces / PU
<b>EPIC® 4/0 screw termination</b>				
44424041	EPIC® K 4/0 SS	male	4 + PE	10
44424042	EPIC® K 4/0 BS	female	4 + PE	10
<b>EPIC® K 4/2 screw termination</b>				
44424043	EPIC® K 4/2 SS	male	4 + 2 + PE	10
44424044	EPIC® K 4/2 BS	female	4 + 2 + PE	10

PE connection with a 16mm<sup>2</sup> wire only with the recommended ring lug 44424029  
The inserts must be used with the appropriate housings  
Photographs and graphics are not to scale and do not represent detailed images of the respective products.