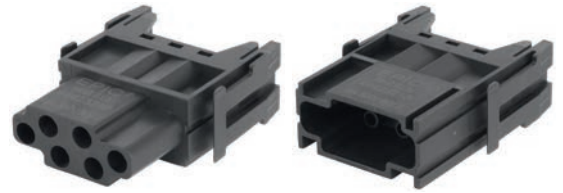




EPIC® MH 6

High flexibility by the use of any combination of inserts in one connector



i Info

- Modular connector system, pluggable with the market standard
- Module 6 pole for control signals

Suitable housing

- EPIC MH 6 R Page 570
- EPIC MH 10 R Page 570
- EPIC MH 16 R Page 570
- EPIC MH 24 R Page 570
- EPIC® H-B housing use in high version

Suitable contacts:

- EPIC® H-BE 2.5 machined contacts Page 590

Benefits

- Module 6 pole for control signals
- Crimp connection for permanent vibration proof contact
- EPIC® MH system is mateable with the market standard
- The mix of different functions in one plug guarantees high flexibility
- Railway applications
 - Fire protection on railway vehicles: Test according EN 45545-2. Requirement sets R22 and R23. Hazard level HL1, HL2 and HL4

Application range

- Mechanical engineering
- Robotics industry
- Plant engineering
- Renewable energy
- Railway applications / vehicle construction

Technical data

| | |
|--|--|
| <p> Classification ETIM 5/6 ETIM 5.0/6.0 Class-ID: EC002641 ETIM 5.0/6.0 Class-Description: Modular connector (industrial connector)</p> <p> Rated voltage (V) 500</p> <p>Rated impulse voltage 6 kV</p> <p> Rated current (A) 16 A</p> <p> Pollution degree 3</p> <p> Flammability UL94 V-0</p> | <p>Contact resistance < 5 mOhm</p> <p> Number of contacts 6</p> <p> Termination methods Crimp termination</p> <p> Material Polyamide, glass fibre-reinforced</p> <p> Cycle of mechanical operation 500</p> <p> Certifications UL-tested: UL File Number: E75770</p> <p> Temperature range -40°C +125°C</p> |
|--|--|

| Article number | Article description | Contact type | Number of operating contacts | Slots | Pieces / PU |
|-------------------|---------------------|--------------|------------------------------|-------|-------------|
| EPIC® MH 6 | | | | | |
| 44423218 | EPIC® MHS 6 CM | male | 6 | 1 | 10 |
| 44423219 | EPIC® MHB 6 CM | female | 6 | 1 | 10 |

Photographs and graphics are not to scale and do not represent detailed images of the respective products.