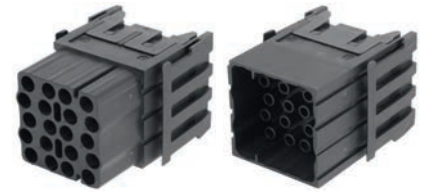




EPIC® MH 20

High flexibility by the use of any combination of inserts in one connector



i Info

- Modular connector system, plugable with the market standard
- Double module 20 pole for control signals

Suitable housing

- EPIC MH 6 R Page 570
- EPIC MH 10 R Page 570
- EPIC MH 16 R Page 570
- EPIC MH 24 R Page 570
- EPIC® H-B housing use in high version

Suitable contacts:

- EPIC® H-BE 2.5 machined contacts Page 590

Benefits

- Double module 20 pole for control signals
- Crimp connection for permanent vibration proof contact
- EPIC® MH system is mateable with the market standard
- The mix of different functions in one plug guarantees high flexibility
- Railway applications
 - Fire protection on railway vehicles: Test according EN 45545-2. Requirement sets R22 and R23. Hazard level HL1, HL2 and HL4

Application range

- Mechanical engineering
- Robotics industry
- Plant engineering
- Renewable energy
- Railway applications / vehicle construction

Technical data

<p> Classification ETIM 5/6 ETIM 5.0/6.0 Class-ID: EC002641 ETIM 5.0/6.0 Class-Description: Modular connector (industrial connector)</p> <p> Rated voltage (V) 500</p> <p>Rated impulse voltage 6 kV</p> <p> Rated current (A) 16 A</p> <p> Pollution degree 3</p> <p> Flammability UL94 V-0</p>	<p>Contact resistance < 5 mOhm</p> <p> Number of contacts 20</p> <p> Termination methods Crimp termination</p> <p> Material Polyamide, glass fibre-reinforced</p> <p> Cycle of mechanical operation 500</p> <p> Certifications UL-tested: UL File Number: E75770</p> <p> Temperature range -40°C +125°C</p>
--	---

Article number	Article description	Contact type	Number of operating contacts	Slots	Pieces / PU
EPIC® MH 20					
44423226	EPIC® MHS 20 CM	male	20	2	10
44423227	EPIC® MHB 20 CM	female	20	2	10

Photographs and graphics are not to scale and do not represent detailed images of the respective products.