



EPIC® MH 6 multi frame

High flexibility by the use of any combination of inserts in one connector



i Info

- Modular connector system, pluggable with the market standard
- Frame system for modules

EPIC® MH 10 multi frame

High flexibility by the use of any combination of inserts in one connector

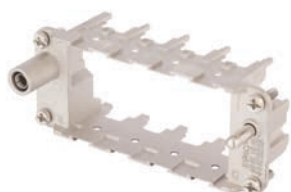


i Info

- Modular connector system, pluggable with the market standard
- Frame system for modules

EPIC® MH 16 multi frame

High flexibility by the use of any combination of inserts in one connector



i Info

- Modular connector system, pluggable with the market standard
- Frame system for modules

EPIC® MH 24 multi frame

High flexibility by the use of any combination of inserts in one connector



i Info

- Modular connector system, pluggable with the market standard
- Frame system for modules

EPIC® MH Clip

High flexibility by the use of any combination of inserts in one connector



i Info

- Modular connector system, pluggable with the market standard
- Adapter clip for modules of competition

Suitable housing

EPIC® MH 6 multi frame

- EPIC® ULTRA H-B 6
- EPIC® H-B 6 Housings]

EPIC® MH 10 multi frame

- EPIC® ULTRA H-B 10
- EPIC® H-B 10 Housings

EPIC® MH 16 multi frame

- EPIC® ULTRA H-B 16
- EPIC® H-B 16 Housings

EPIC® MH 24 multi frame

- EPIC® ULTRA H-B 24
- EPIC® H-B 24 Housings]

Benefits

EPIC® MH 6 multi frame

EPIC® MH 10 multi frame

EPIC® MH 16 multi frame

EPIC® MH 24 multi frame

- Multi frame for own and competition modules
- EPIC® MH system is mateable with the market standard
- The mix of different functions in one plug guarantees high flexibility
- Railway applications
 - Fire protection on railway vehicles: Test according EN 45545-2. Requirement sets R22 and R23. Hazard level HL1, HL2 and HL4
- PE connection from 1mm² up to 6mm² with end sleeve, 10mm² with adapter

EPIC® MH Clip

- EPIC® MH Clip for mounting of competition modules in EPIC® MH frame
- EPIC® MH system is mateable with the market standard
- The mix of different functions in one plug guarantees high flexibility
- Railway applications
 - Fire protection on railway vehicles: Test according EN 45545-2. Requirement sets R22 and R23. Hazard level HL1, HL2 and HL4

Application range

- Mechanical engineering
- Robotics industry
- Plant engineering
- Renewable energy
- Railway applications / vehicle construction

Technical data



Classification ETIM 5/6

ETIM 5.0/6.0 Class-ID: EC002641
 ETIM 5.0/6.0 Class-Description:
 Modular connector (industrial connector)



Material

EPIC® MH 6 multi frame
 Zinc die-cast
EPIC® MH 10 multi frame
 Zinc die-cast
EPIC® MH 16 multi frame
 Zinc die-cast
EPIC® MH 24 multi frame
 Zinc die-cast



Cycle of mechanical operation

EPIC® MH 6 multi frame
 500
EPIC® MH 10 multi frame
 500
EPIC® MH 16 multi frame
 500
EPIC® MH 24 multi frame
 500



Temperature range

-40°C
 +125°C

Article number	Article description	Contact type	Slots	Pieces / PU
EPIC® MH 6 multi frame				
44423234	EPIC® MHS 6 R (A,B)	male	2	10
44423235	EPIC® MHB 6 R (a, b)	female	2	10
EPIC® MH 10 multi frame				
44423236	EPIC® MHS 10 R (A, B, C)	male	3	10
44423237	EPIC® MHB 10 R (a, b, c)	female	3	10
EPIC® MH 16 multi frame				
44423238	EPIC® MHS 16 R (A, B, C, D)	male	4	10
44423239	EPIC® MHB 16 R (a, b, c, d)	female	4	10
EPIC® MH 24 multi frame				
44423240	EPIC® MHS 24 R (A, B, C, D, E, F)	male	6	10
44423241	EPIC® MHB 24 R (a, b, c, d, e, f)	female	6	10
EPIC® MH Clip				
44423264	EPIC® MH Clip			20

Photographs and graphics are not to scale and do not represent detailed images of the respective products.

Accessories

EPIC® MH 6 multi frame

- EPIC MH Clip refer to page 570

EPIC® MH 10 multi frame

- EPIC MH Clip refer to page 570

EPIC® MH 16 multi frame

- EPIC MH Clip refer to page 570

EPIC® MH 24 multi frame

- EPIC MH Clip refer to page 570