



### EPIC® MC module: HC1+PE

The mixed assembly guarantees high flexibility. For applications in mechanical and plant engineering, for printing machines and slide-in technology.

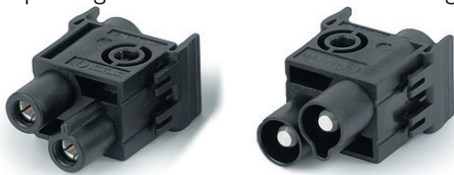


**Info**

- High power module with screw connection and reinforced protection earth
- Lever for rapid removal of the module

### EPIC® MC module: HC2

The mixed assembly guarantees high flexibility. For applications in mechanical and plant engineering, for printing machines and slide-in technology.



**Info**

- High power module 2pole with screw connection
- Lever for rapid removal of the module

#### Suitable housing

- EPIC® MCR 6 Page 583
- EPIC® MCR 10 Page 583
- EPIC® MCR 16 Page 583
- EPIC® MCR 24 Page 583
- Higher housing
- The suitable connector housings depend on the modular frame used

#### Benefits

##### EPIC® MC module: HC1+PE

- The mix of different functions in one plug guarantees high flexibility
- Screw connection up to 25mm<sup>2</sup> for easy assembly without special tools
- Separate protective conductor for increased safety

##### EPIC® MC module: HC2

- The mix of different functions in one plug guarantees high flexibility
- Screw connection up to 25mm<sup>2</sup> for easy assembly without special tools

#### Application range

- Plant engineering
- Printing machines
- Control engineering

#### Suitable tools

##### EPIC® MC module: HC1+PE

- Crimping tool for single contacts
- When connecting 25 mm<sup>2</sup> cables, please use the special crimping die (11147500) for the cable-end sleeves

#### Technical data

<b>Classification ETIM 5/6</b> ETIM 5.0/6.0 Class-ID: EC002641 ETIM 5.0/6.0 Class-Description: Modular connector (industrial connector)	<b>Number of contacts</b> <b>EPIC® MC module: HC1+PE</b> 1 + PE <b>EPIC® MC module: HC2</b> 2
<b>Rated voltage (V)</b> IEC: 1000 V UL: 600 V CSA: 600 V	<b>Termination methods</b> Screw termination: 10 - 25 mm <sup>2</sup> <b>Stripping length (mm)</b> 15
<b>Rated current (A)</b> 82 A	<b>Cycle of mechanical operation</b> 100
<b>Pollution degree</b> 3	<b>VDE-tested</b> Certified production control: VDE-REG. no. A870 UL-tested: UL File Number: E75770
<b>Contact resistance</b> < 2 mOhm	<b>Temperature range</b> -40°C to +100°C, short-term up to +125°C
<b>Contacts</b> Copper alloy, hard silver-plated	

Article number	Article description	Contact type	Number of operating contacts	Slots	Pieces / PU
<b>Module: high current 1-pin + PE</b>					
10344600	MCS-HC 1+PE	male	1 + PE	2	5
10345600	MCB-HC 1+PE	female	1 + PE	2	5
<b>Module: high current 2-pin</b>					
10344100	MCS-HC 2	male	2	2	5
10345100	MCB-HC 2	female	2	2	5

Photographs and graphics are not to scale and do not represent detailed images of the respective products.

ÖLFLEX®  
UNITRONIC®  
ETHERLINE®  
HITRONIC®  
EPIC®  
SKINTOP®  
SILVYN®  
FLEXIMARK®  
ACCESSORIES  
APPENDIX