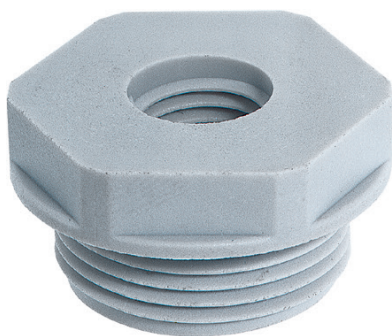




SKINDICHT® KU-M

**Benefits**

- Enables the use of cable glands with smaller connection threads than the existing threaded holes

Application range

- Machines
- Devices
- Housings

Product Make-up

- Metric connection thread acc. to DIN EN 60423
- Basis for technical information DIN IEC 62444

Technical data

	Classification ETIM 5/6 ETIM 5.0/6.0 Class-ID: EC000441 ETIM 5.0/6.0 Class-Description: Cable screw gland
	Colour delivered Light grey (RAL 7035)
	Material Polyamide, glass fibre-reinforced
	Temperature range -40°C to +100°C

Article number	Thread, male M1	Thread, female M2	SW wrench size mm	Pieces / PU
SKINDICHT® KU-M				
52104505	16 x 1.5	12 x 1.5	22	100
52104470	20 x 1.5	12 x 1.5	24	100
52104504	20 x 1.5	16 x 1.5	24	100
52104472	25 x 1.5	12 x 1.5	29	100
52104473	25 x 1.5	16 x 1.5	29	100
52104474	25 x 1.5	20 x 1.5	29	100
52104475	32 x 1.5	12 x 1.5	36	50
52104476	32 x 1.5	16 x 1.5	36	50
52104477	32 x 1.5	20 x 1.5	36	50
52104478	32 x 1.5	25 x 1.5	36	50
52104479	40 x 1.5	16 x 1.5	46	50
52104480	40 x 1.5	20 x 1.5	46	50
52104481	40 x 1.5	25 x 1.5	46	25
52104482	40 x 1.5	32 x 1.5	46	25
52104483	50 x 1.5	20 x 1.5	55	5
52104484	50 x 1.5	25 x 1.5	55	5
52104485	50 x 1.5	32 x 1.5	55	5
52104486	50 x 1.5	40 x 1.5	55	5
52104487	63 x 1.5	25 x 1.5	68	5
52104488	63 x 1.5	32 x 1.5	68	5
52104489	63 x 1.5	40 x 1.5	68	5
52104469	63 x 1.5	50 x 1.5	68	5

Photographs and graphics are not to scale and do not represent detailed images of the respective products.

Accessories

- SKINTOP® GMP-GL-M refer to page 716



SKINDICHT® MR-M

**Benefits**

- Enables the use of cable glands with smaller connection threads than the existing threaded holes

Application range

- Machines
- Devices
- Housings

Product Make-up

- Metric connection thread acc. to DIN EN 60423
- Basis for technical information DIN IEC 62444

Technical data

	Classification ETIM 5/6 ETIM 5.0/6.0 Class-ID: EC000441 ETIM 5.0/6.0 Class-Description: Cable screw gland
	On request Also available with pre-installed O-ring
	Material Nickel-plated brass
	Temperature range -60°C to +200°C