

V-90HT APPLIANCE WIRE

TINNED CONDUCTORS WITH 1000V RATING



Construction

» Flexible Class 5 fine wire stranding, PVC insulation, tinned copper conductor.

Temperature Rating

» -20°C to 105°C

Nominal Voltage

» 0.6/1kV

Test Voltage

» 3000V

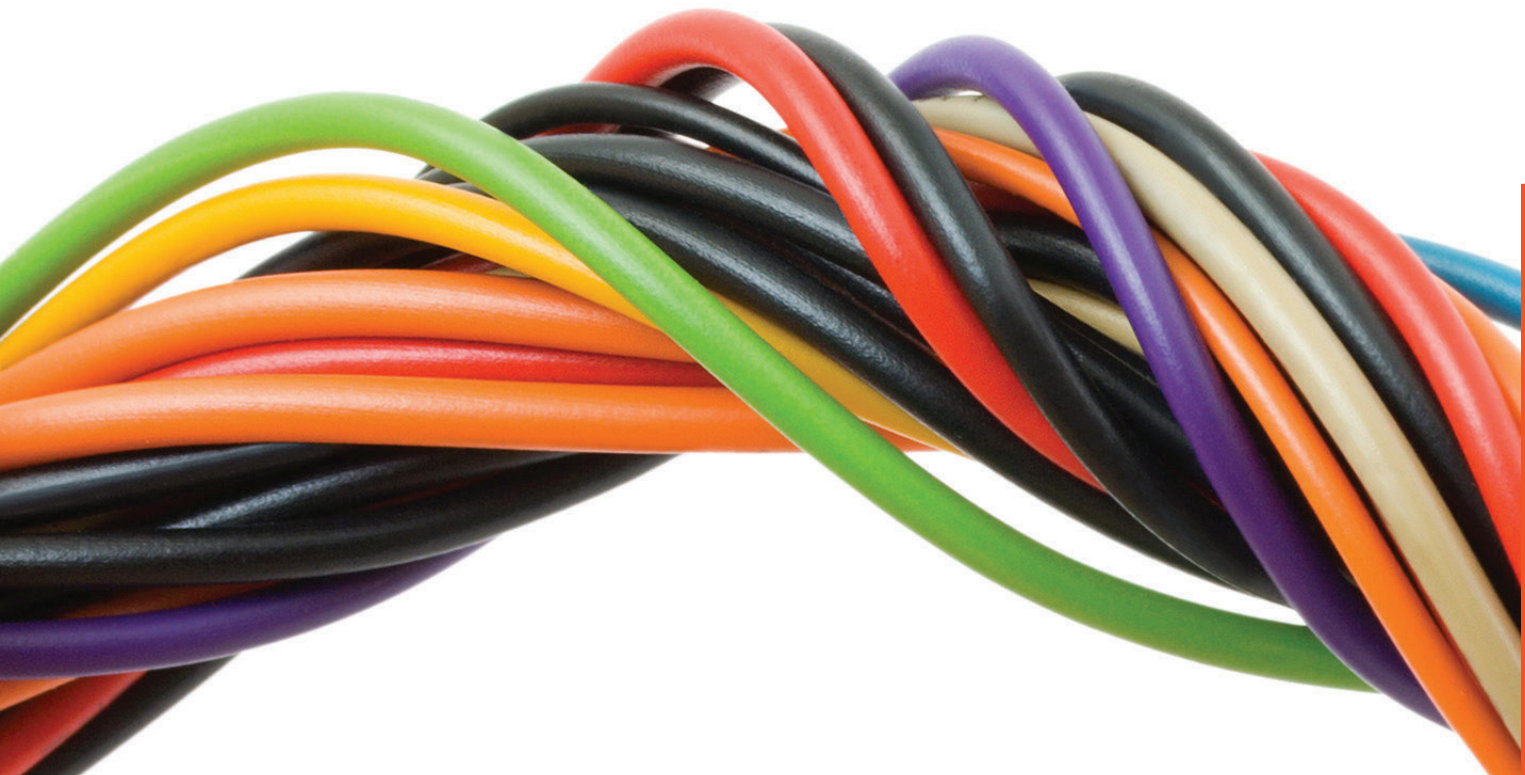
Standards
AS/NZS 5000.1
UL 1015

Conductor	0.5mm ²	0.75mm ²	1mm ²	1.5mm ²	2.5mm ²	4mm ²	6mm ²	10mm ²	16mm ²
Cable OD	2.55mm	2.75mm	2.95mm	3.25mm	3.7mm	4.3mm	4.9mm	6.5mm	8.4mm
Green / Yellow	3801000	3801010	3801020	3801030	3801040	3801050A	3801060A	3801070	3801522
Black	3801001	3801011	3801021	3801031	3801041	3801051A	3801061A	3801071	3801081
Light Blue	3801002	3801012	3801022	3801032	3801042	3801052A	3801062A	3801072	3801082
Red	3801004	3801014	3801024	3801034	3801044	3801054A	3801064A	3801074	3801084
White	3801005	3801015	3801025	3801035	3801045	3801055A	3801065A	3801075	3801085
Blue	38010014	38010114	38010214	38010314	38010414	38010514A	38010614A		
Brown	3801003	3801013	3801023	3801033	3801043	3801053A	3801063A		3801083
Grey	3801006	3801016	3801026	3801036	3801046	3801056A			
Orange	3801009	3801019	3801029	3801039	3801049				
Violet	3801007	3801017	3801027	3801037	3801047				
Pink	3801008	3801018	3801028	3801038	3801048				
Yellow	38010011	38010111	38010211	38010311	38010411				

CURRENT RATINGS FOR V90HT BUILDING WIRE

Conductor cross-sectional area	Unenclosed						Enclosed		Single Phase Voltage Drop
	Spaced		Spaced from surface		Touching		Conduit in air		
mm ²	A	A	A	A	A	A	A	A	mV/A/m
1	16	16	16	14	13	13	13	11	54.0
1.5	21	20	21	17	16	16	16	14	34.6
2.5	30	29	29	25	23	23	22	20	18.9
4	40	38	39	33	31	31	30	26	11.7
6	51	49	49	42	40	40	38	34	7.86
10	69	67	67	58	54	54	53	47	4.67
16	92	89	89	77	72	72	71	62	2.94

These ratings are based on an ambient air temperature of 40° C, and an ambient soil temperature of 15° C at 0.5m depth.



LAPP

V90 HT APPLIANCE WIRE