

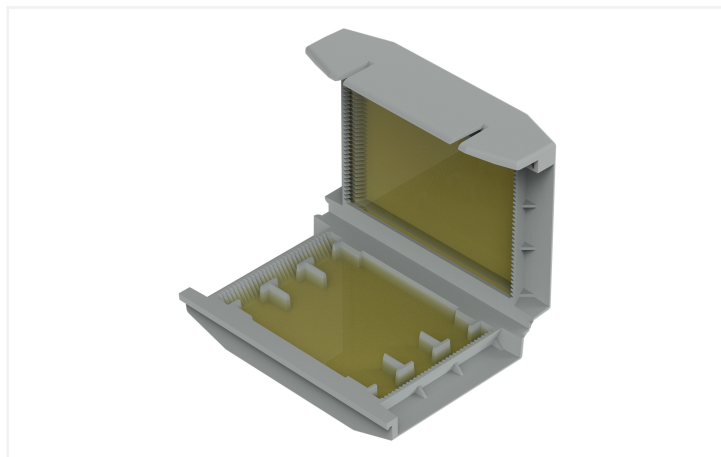
**Data Sheet | Item Number: 207-1373**

Gelbox; inline connection; for cables; with gel; 221 Series; max. 4 mm<sup>2</sup> connectors; without splicing connectors; Size 2; gray

<https://www.wago.com/207-1373>



Color: ■ gray



**Application Examples**

- Bathroom installation
- Washing facilities/irrigation systems
- Parking lot lighting
- Farms and garden centers
- Swimming pool areas
- Charging stations and lighting systems in ports

**Note on Packaging Unit (PU) and Subpackaging Unit (SPU):**

If you order a full PU, you will receive our eco-friendly, sustainable cardboard blisters packed in a shelf-ready box.

If you order a quantity smaller than a full PU, you will receive the eco-friendly, sustainable cardboard blisters without a shelf-ready box.

Please refer to the system description for the splicing connectors that can be used.

**Your benefits:**

- Easy, fast and safe to use
- Can be used immediately and accessed again later
- Silicon-free
- Label-free
- Suitable for indefinite storage
- The complete system consisting of WAGO's gelboxes and splicing connectors has been VDE-tested and IPX8-certified.

**Connection data****Connection 1**

Actuation type	Locking system
----------------	----------------

**Physical data**

Width	41.7 mm / 1.614 inches
Height	17.8 mm / 0.669 inches
Depth	56.9 mm / 2.205 inches

**Mechanical data**

Design	Size 2
Mounting type	Flying leads
Protection type	IPX8
Suitable	for 4 mm <sup>2</sup> inline splicing connectors

**Material data**

Note (material data)	<a href="#">Information on material specifications can be found here</a>
Color	gray
Housing material	Polypropylene
Fire load	0 MJ
Weight	19.8 g

**Environmental requirements**

Ambient temperature (operation)	-55 ... +85 °C
Ambient temperature (storage)	0 ... +40 °C

**Commercial data**

ETIM 9.0	EC001170
ETIM 8.0	EC001170
PU (SPU)	28 (4) pcs
Packaging type	Box
Country of origin	DE
GTIN	4066966350067
Customs tariff number	85389099990

**Environmental Product Compliance**

RoHS Compliance Status	Compliant, No Exemption
------------------------	-------------------------

**Approvals / Certificates**

**General approvals**



Approval	Standard	Certificate Name
VDE VDE Prüf- und Zertifizierungsinstitut	EN 60998	40051938

**Downloads**

**Environmental Product Compliance**

Compliance Search
Environmental Product Compliance 207-1373 <a href="#">↓</a>

**Documentation**

System Description			Additional Information		
System Description 207 Series Gel boxes	pdf 1156.45 KB	<a href="#">↓</a>	Certificate	pdf 2308.76 KB	<a href="#">↓</a>
System Description 207 Series Gel boxes	pdf 1191.37 KB	<a href="#">↓</a>	DLG Test Report 7438	pdf 1455.46 KB	<a href="#">↓</a>

## CAD/CAE-Data

### CAD data

2D/3D Models  
207-1373



## Installation Notes

### Installation



Open the Gelbox at the side latches.



Place the wired connector in the Gelbox.



Close the Gelbox.

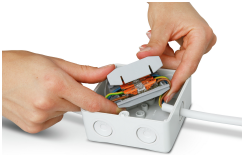


Close latch securely.



Re-accessible:  
Open the Gelbox, remove the gel, open the connector and rewire with new components.

## Application



For low voltage applications > 50 V, use the Gelbox in a junction box.



Connecting a path light.



Lift the flap and pull the cover perforation forward.



Press in the perforation on the sides.



Tear off the cover from the perforation.



As a counter display: Bend the rear flap at the fold, straighten it and fix it in the cardboard cut-out



If the flap is not required, tear off from the perforation.