

## Data Sheet | Item Number: 211-811

Marker; for Smart Printer; for use in nozzles; Length: 12 mm; white

<https://www.wago.com/211-811>



Color: ■ white

### Technical data

Marking method	Thermal transfer
Marking	plain
Delivery form	Roll
Delivery form configuration	2,500 markers/reel
Printing device	Smart Printer (thermal transfer printer)

### Physical data

Depth	0.26 mm
Length	12 mm
Marking surface	4 x 12 mm

### Mechanical data

Mounting type	Pushing in
Smear resistance	in conjunction with 258-5005 Ink Ribbon

### Material data

Color	white
Material	Polyester
UV resistance	EN 60068-2-5:2010 Procedure B
Adhesive information	without adhesive
Halogen-free	Yes
Weight	221 g
Fire load	0 MJ

Environmental requirements	
Ambient temperature (storage)	+10 ... +22 °C
Ambient temperature (operation)	-20 ... +80 °C
Relative humidity	40 ... 50 %

Commercial data	
Product Group	2 (Terminal Block Accessories)
eCl@ss 10.0	27-40-04-01
eCl@ss 9.0	27-40-06-29
ETIM 9.0	EC001530
ETIM 8.0	EC001530
PU (SPU)	1 pcs
Packaging type	Box
Country of origin	DE
GTIN	4050821674979
Customs tariff number	39269097900

Environmental Product Compliance	
RoHS Compliance Status	Compliant, No Exemption

## Downloads

### Environmental Product Compliance

Compliance Search	
Environmental Product Compliance 211-811	<a href="#">↓</a>

## Documentation

Operating Instructions			
211-821 Information on printing material	1	pdf	1248.71 KB
	28.08.2020		<a href="#">↓</a>

## 1 Compatible Products

### 1.1 Optional Accessories

#### 1.1.1 Marking

##### 1.1.1.1 Marking device



**Item No.: 258-5000**  
 Thermal transfer printer; Smart Printer; for complete control cabinet marking; 300 dpi; With marking material

### 1.1.1.2 Marking sleeve



**Item No.: 211-812**

Nozzles; Length: 12 mm; For the use of 211-811; halogen-free; Cable outer diameter: 1.4 ... 5.0 mm; transparent

**Item No.: 211-813**

Nozzles; Length: 12 mm; For the use of 211-811; halogen-free; Cable outer diameter: 5.0 ... 11.0 mm; transparent

## Installation Notes

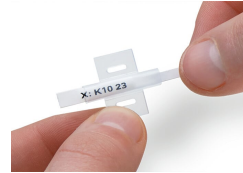
### Marking



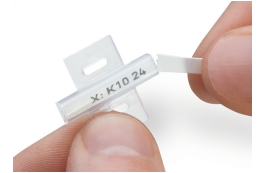
Remove the printed marker from the reel.



Slide the marker into the marking sleeve receptacle. Replacing the marker is also possible after the conductor has been terminated.



Slide the marker through the marker slot up to the end of the sleeve.



Then remove the rest of the card by twisting it off.