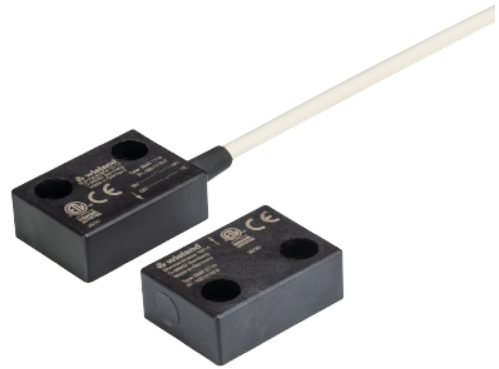


Data sheet

Commercial Art.No.: R1.100.0123.0

magnet switch set SMA 0123

safety switch and magnet, manipulation safe, rectangle-shaped design, dimensions LxWxH: 36x26x13mm, normally open / normally open contact, protection category: IP67, cable length: 3m



Commercial Art.No.	R1.100.0123.0
EAN	4049088014499
Order Unit	1

certificates / approvals



Technical data

general

suitable for safety functions	yes
housing material	plastic
switching distance	0.5 mm
number of protected contact energized outputs	2
type of electric connection	cable
cable length	3 m
construction type housing	cuboid
protected switch distance ON	8 mm
protected switch distance OFF	17 mm
cross-/short circuit identification possible	yes
degree of protection (IP)	IP67
type of actuation	magnet

safety parameters

category (ISO 13849-1)	4
PL (ISO 13849-1)	level e
SIL _{Cl} (IEC 62061)	3
HFT	1
T _M	20 a

output circuit

max. output current at protected output	200 mA
min. output current	5 mA
min. rated supply voltage at DC	5 V

max. rated supply voltage at DC	48 V
---------------------------------	------

other

voltage type	DC
number of protected semiconductor outputs	0
type of switch output	other

dimensions

width sensor	26 mm
height of sensor	13 mm
length of sensor	36 mm

classification

ECLASS 11	
ECLASS 8.1	27270105
ETIM 9.0	EC002544
ETIM 8.0	EC002544
ETIM 7.0	EC002544
ETIM 6.0	EC002544
ETIM 5.0	EC002544
ETIM 4.0	EC002544

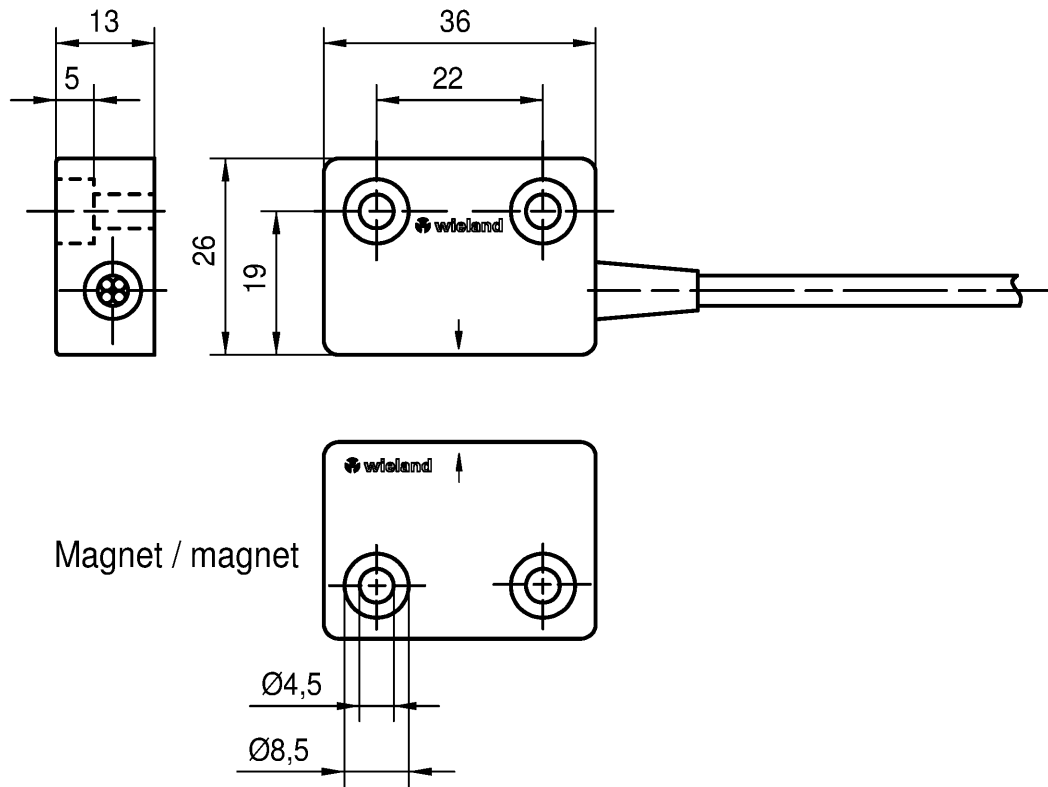
product compliance

ROHS conformity status	compliant
REACH-SVHC conformity status	compliant

Accessories

Commercial Art.No.:	Article-type description:	Description:
R1.100.5004.0	connection cable M8 SMA 5004	M8 cable female, 4-pole, end cut off, cable length: 5m
R1.100.5005.0	connection cable M8 SMA 5005	M8 cable female, 4-pole, end cut off, cable length: 10m

Weitergabe sowie Vervielfältigung dieses Dokuments, Verwertung und Mitteilung
 seines Inhalts sind verboten, soweit nicht ausdrücklich gestattet.
 The reproduction, distribution and utilization of this document as well as the
 communication of its contents to others without express authorization is prohibited.



Magnet / magnet

Qu - PEE 12/92

Weitere Angaben siehe KATALOG oder eKatalog.
 Additional data see CATALOG or eCatalog.

www.wieland-electric.com
eshop.wieland-electric.com

Teile Nr. / Part No.
R1.100.0113.0
R1.100.0123.0

ja/yes Stoffverbots- und Deklarationsliste nach WN 5020.010 ist einzuhalten.
 Conformity with Wieland document WN 5020.010 e (list of prohibited / declarable hazardous substances) to be declared!

Freitoleranz nach General tolerance		CAD-Zeichnung, keine manuellen Änderungen CAD-Drawing, no manual modifications allowed			1. Verwendung: First Use:		Blatt: Sheet:		
		Werkstoff/ Material		2014	Tag/ Date	Name	Zeichnung Nr./ Drawing No. T R1.100.0113.0 01K		
				gezeichnet drawn	29.10.	Kötzner			
Maßstab/Scale				geprüft checked			Maße in mm/Dimensions are in mm		
				Normgepr. Stand. check					
Datei/ File: 028681__01K.DCD				Ersatz für/ Replacement for:					
 www.wieland-electric.com		Type		Benennung/ Title		Teilespezifikation / Component specification			
						Magnetschalterset quaderförmig / Machine safety switch set, rectangular			
Index	Datum/ Blatt Date/ Sheet								
Änderung/ Revision									

A
1
2
3
4
5
6
7
8
9
10
11
12
13
14
15
16
17
18
19
20
M1
M2
M3
L
G
i
11.1
12.1
1.1