

Data sheet

Commercial Art.No.: Z7.284.4227.0

jumper bar IVBWK 16- 2

Cross connector, insulated for DIN rail terminal blocks type WKF..., 2 -pole



| | |
|--------------------|---------------|
| Commercial Art.No. | Z7.284.4227.0 |
| EAN | 4015573533516 |
| Order Unit | 10 |

certificates / approvals

ATEX

SEV-Ex

Technical data

general

| | |
|--------------------------|-----------------|
| color | yellow |
| modular spacing | 12 mm |
| number of bridged clamps | 2 |
| mounting method | pluggable |
| insulated | yes |
| model | cross connector |

accessories

| | |
|--------------------------|-----------|
| rated current | 76 A |
| mounting method | pluggable |
| insulated | yes |
| color | yellow |
| number of bridged clamps | 2 |
| modular spacing | 12 mm |

classification

| | |
|------------|----------|
| ECLASS 11 | |
| ECLASS 8.1 | 27141140 |
| ETIM 9.0 | EC000489 |
| ETIM 8.0 | EC000489 |
| ETIM 7.0 | EC000489 |
| ETIM 6.0 | EC000489 |

| | |
|----------|----------|
| ETIM 5.0 | EC000489 |
| ETIM 4.0 | EC000489 |
| ETIM 3.0 | EC000489 |

product compliance

| | |
|------------------------------|-----------|
| ROHS conformity status | compliant |
| REACH-SVHC conformity status | compliant |

A

B

C

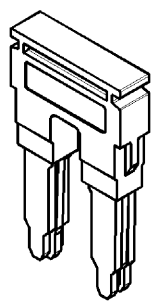
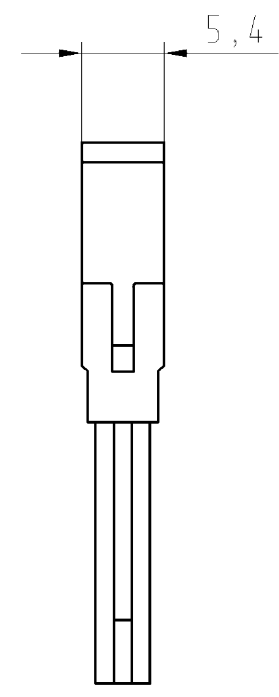
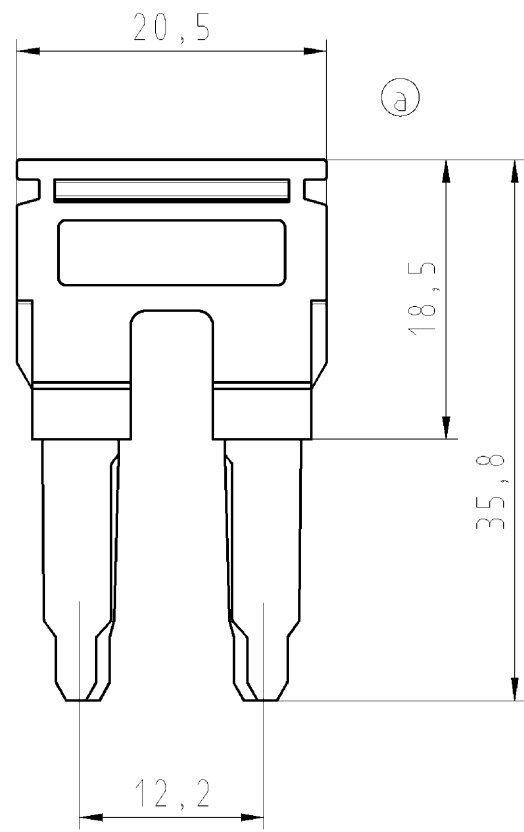
D

E

F

These dimensions will be especially checked at delivery
 Only inspection dimensions
 With /E marked dimensions are only valid for internal use

Diese Maße werden bei Abnahme besonders geprüft
 Ausschließlich Prüfmaße
 Mit /E gekennzeichnete Maße sind nur für interne Zwecke gültig



Weitere Daten siehe Katalog
further data see catalog

ISO
M1 : 1

Weitergabe sowie Vervielfältigung dieses Dokuments, Verwertung und Mitteilung seines Inhalts sind verboten, soweit nicht ausdrücklich gestattet. Die Reproduktion, Distribution und Utilization of this document as well as the communication of its contents to others without express authorization is prohibited.

| | | | | | | | | | |
|---|--|---|--|---|----------|-------------------------------|--|---------------------------------|--|
| Tolerierung Size ISO 14405(☉)/Tolerance system Size ISO 14405(☉). (This ISO-standard describes the envelope principle. According to the envelope principle the deviations of form and parallelism are limited by the size tolerances). | | | | ja/yes <input checked="" type="checkbox"/> Stoffverbots- und Deklarationsliste nach UU-TQM-05/03 ist einzuhalten. Conformity with Wieland document UU-TQM-05/03 (list of prohibited / declarable hazardous substances) to be declared! | | | | | |
| Freitoleranz nach General tolerance | | DIN ISO 2768 - m | | CAD - Zeichnung, keine manuellen Änderungen CAD - drawing, no manual modifications allowed | | 1.Verwendung: - First Use: | | Blatt: 1 von 1 Sheet: 1 of 1 | |
| | | Werkstoff/Material | | 2013 | Tag/Date | Name | | Zeichnung Nr./Drawing No. | |
| | | | | gezeichnet drawn | 05.03. | Treschan | | Z7.284.4227.0 01K a | |
| | | Maßstab/Scale | | geprüft checked | - | - | | | |
| | | 2:1 | | Normgepr. Stand., check | - | - | | Maße in mm/Dimensions are in mm | |
| | | Vol. mm ³ Oil./Surf. mm ² | | Ersatz für/Replacement for: gl.Nr.v. 10.11.2004 (a) | | | | | |
| | | wieland | | Type | | Benennung/Tittle | | | |
| a | | 05.03.2013/ | | IVB WKF | | VERBINDUNGSSTECKER | | | |
| Index | | Datum / Blatt Date / Sheet | | 16-2 | | jumper bar gelb / yellow | | | |
| Änderung/Revision | | Elektrische Verbindungen | | | | | | | |