



DATA SHEET	61791330
SKINTOP® LOCATOR	Valid from: 01.09.2016

Product description:

SKINTOP® LOCATOR is a magnetic template with borehole dimensions. This tool is helpful for assembling of metric SKINTOP® cable glands in metal switch board cabinets or panel boxes. Mark the outer diameter for minimal installation distance.

Caution: Dimensions may vary from different cable gland manufacturers.



Components:

Surface	Transparent PET-G
Glue	Acrylic based
Magnetic layer	Magnaflex foil

Technical features:

Temperature range	from -20°C to +60°C
Sizes	from M 12x1,5 to M 63x1,5 according to IEC 62444

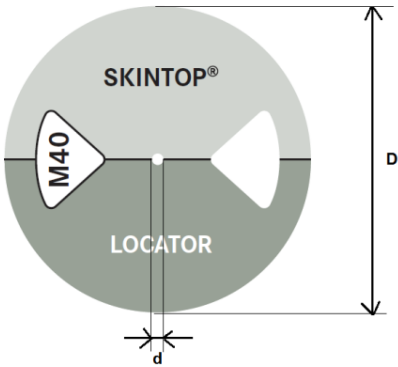
SKINTOP® LOCATOR M12-M25 / Part number 61791330 – Set/Box 1

Size	Pieces in box	For mounting hole	Disk overall diameter D [mm]	Color
M12	5	12,3-0,2	23	Orange
M16	5	16,3-0,2	28	Violet
M20	5	20,3-0,2	33	Turquoise
M25	5	25,3-0,2	40	Yellow

SKINTOP® LOCATOR M32-M63 / Part number 61791331 – Set/Box 2

Size	Pieces in box	For mounting hole	Disk overall diameter D [mm]	Color
M32	4	32,3-0,2	48	Blue
M40	3	40,4-0,3	58	Gray
M50	2	50,4-0,3	68	Green
M63	1	63,4-0,3	83	Red

Central hole diameter d:	3 mm
Thickness:	2 mm



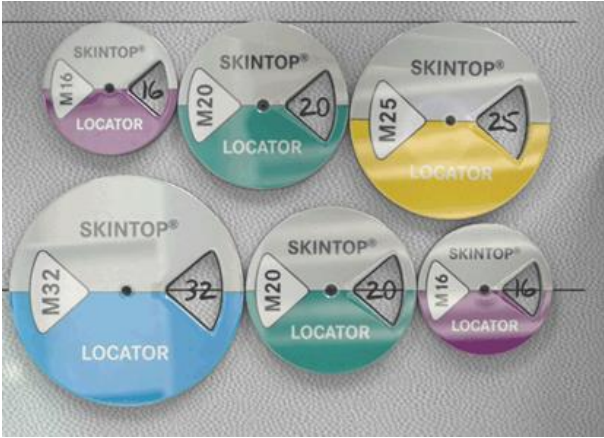
Originator: MAPA1	Document: DB61791330EN	Page 1 of 2
Approved: HYDO1 / PDP	Version: 00	



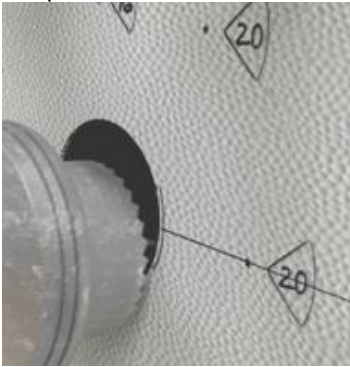
DATA SHEET	61791330
SKINTOP® LOCATOR	Valid from: 01.09.2016

How to be used:

Step 1. Plan:



Step 2. Drill:



Step 3. Mount:



Originator: MAPA1 Approved: HYD01 / PDP	Document: Version: 00	DB61791330EN	Page 2 of 2
--	--------------------------	--------------	-------------