

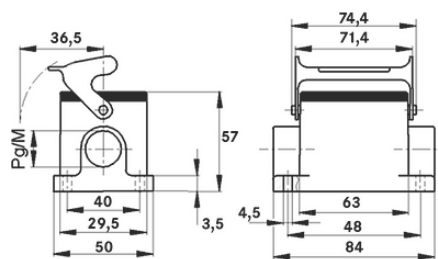
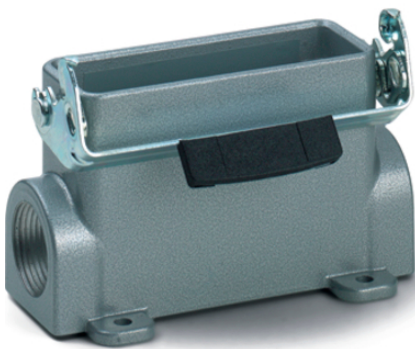
## EPIC® H-A 10 SGRL-LB

These connectors are attractive because of their compact housing.

The compact base housing has a single lever and 2 cable entries. The housing is suitable for rectangular connectors and for use in control systems, for example.

### Info

For easy introduction of two cables  
 Protection rating UL50E tested



Mechanical and plant engineering



Mechanical resistance



Robust



Waterproof

### Benefits

Small and space-saving for narrow available space

### Application range

Machine and equipment manufacturing  
 Control engineering  
 Electronic laboratory

### Product features

Surface-mount base  
 Single lever  
 2 cable entries

Last Update (11.11.2024)

©2024 Lapp Group - Technical changes reserved

Product Management [www.lappkabel.de](http://www.lappkabel.de)

You can find the current technical data in the corresponding data sheet.

PN 0456 / 02\_03.16

## EPIC® H-A 10 SGRL-LB

### Technical Data

Classification ETIM 5:	ETIM 5.0 Class-ID: EC000437 ETIM 5.0 Class-Description: Housing for industrial connectors
Classification ETIM 6:	ETIM 6.0 Class-ID: EC000437 ETIM 6.0 Class-Description: Housing for industrial connectors
Material:	Housing: aluminium alloy, grey Lever: zinc-plated steel Sealing: NBR
Protection rating:	IP 65 (latched) NEMA 250, UL50E: 12, 4 (latched)
VDE-tested:	Certified production control: VDE-REG. no.: B437 UL-tested: UL File Number: E75770
Temperature range:	-40°C to +100°C, short-term up to +125°C

### Note

Photographs and graphics are not to scale and do not represent detailed images of the respective products. Prices are net prices without VAT and surcharges. Sale to business customers only.



## EPIC® H-A 10 SGRL-LB

Article number	Article description	M	PG	Packaging unit
H-A housing: surface-mount base (2 cable entries, single lever)				
10450100	H-A 10 SGRL-LB 16	-	16	5
19450100	H-A 10 SGRL-LB M20	20	-	5

Last Update (1.1.11.2024)

©2024 Lapp Group - Technical changes reserved

Product Management [www.lappkabel.de](http://www.lappkabel.de)

You can find the current technical data in the corresponding data sheet.

PN 0456 / 02\_03.16