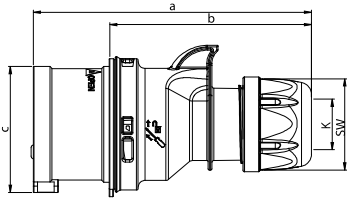


Event technology MIDNIGHT-SERIES



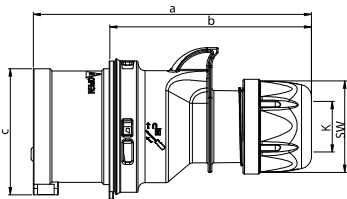
Plug IP44 SHARK

	16 Amp			32 Amp		
	3	4	5	3	4	5
Poles	3	4	5	3	4	5
a [mm]	122	128	134	150	150	155
b [mm]	86	92	98	104	104	109
c [mm]	47	53	61	63	63	70
K_cable Ø [mm]	6-15	6-15	8-16	11,5-20	11,5-20	11,5-22
Wire flexible [mm ²]	1-2,5			2,5-6		
Contact screws [Ncm]	100			110		
SW [mm]	42	42	42	50	50	50
Weight [g]	109	128	151	181	201	232

- with screw terminals
- housing material: PA6
- contacts: brass
- to order nickel-plated contacts please add a "v" e.g. 015-6xv

IP44 splashproof

also available in IP67



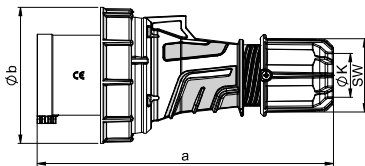
Plug IP44 SHARK TT

	16 Amp			32 Amp		
	3	4	5	3	4	5
Poles	3	4	5	3	4	5
a [mm]	122	128	134	150	150	155
b [mm]	86	92	98	104	104	109
c [mm]	47	53	61	63	63	70
K_cable Ø [mm]	6-15	6-15	8-16	11,5-20	11,5-20	11,5-22
Wire flexible [mm ²]	1-2,5			2,5-6		
SW [mm]	42	42	42	50	50	50
Weight [g]	111	132	156	186	206	241

- screwless connection technology
- housing material: PA6
- contacts: brass
- to order nickel-plated contacts please add a "v" e.g. 015-6TTxv

IP44 splashproof

also available in IP67

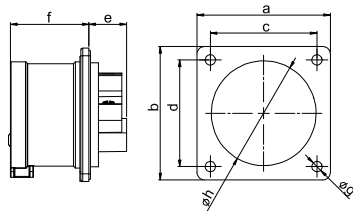


Plug IP67 POWER TWIST

	63 Amp			125 Amp		
	3	4	5	3	4	5
Poles	3	4	5	3	4	5
a [mm]	250	250	250	270	270	270
b [mm]	115	115	115	131	131	131
K_cable Ø [mm]	14,5-36	14,5-36	14,5-36	22,5-50	22,5-50	22,5-50
Wire flexible [mm ²]	6-16			16-50		
Contact screws [Ncm]	200			450		
SW [mm]	61	61	61	81	81	81
Weight [g]	574	621	670	956	1064	1169

- Contact frame with screws (63A) for 125A with hexagon socket screws
- housing material: PA6
- contacts: nickel-plated contacts, with pilot contact (see page 8)

IP66/67 watertight



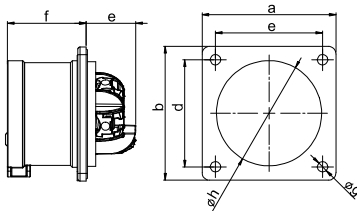
Flanged plug straight IP44

	16 Amp			32 Amp		
	3	4	5	3	4	5
Poles	3	4	5	3	4	5
Flange a x b [mm]	70	70	70	70	70	70
Fixing center c x d [mm]	56	56	56	56	56	56
e [mm]	21	21	20	21	21	21
f [mm]	42	42	42	51	51	51
g [mm]	5,5	5,5	5,5	5,5	5,5	5,5
h [mm]	43	43	55	55	55	55
Wire flexible [mm ²]	1-2,5			2,5-6		
Wire solid [mm ²]	1-4			2,5-10		
Contact screws [Ncm]	100			110		
Weight [g]	86	101	118	125	145	165

- with screw terminals
- housing material: PA6
- contacts: brass
- to order nickel-plated contacts please add a "v" e.g. 615-6xv

• According to EN 60309: For correct use a locking device has to be provided (see page 10)

IP44 splashproof



Flanged plug straight IP67 TT

	16 Amp		32 Amp	
	3	5	4	5
Poles	3	5	4	5
Flange a x b [mm]	70	70	70	70
Fixing center c x d [mm]	56	56	56	56
e [mm]	26	26	29	29
f [mm]	42	42	51	51
g [mm]	5,5	5,5	5,5	5,5
h [mm]	43	55	55	55
Wire flexible [mm ²]	1-2,5		2,5-6	
Wire solid [mm ²]	1-4		2,5-10	
Weight [g]	89	122	151	172

- screwless connection technology
- housing material: PA6
- contacts: brass
- to order nickel-plated contacts please add a "v" e.g. 615-6TTxv

• According to EN 60309: For correct use a locking device has to be provided (see page 10)

IP44 splashproof

230V~

400V~

50/60Hz
3p=6h
4p+5p=9h

50/60Hz
3p=9h
4p+5p=6h

Amp.
Poles
**pack.
unit**

Cat.No.

Cat.No.

16	3	10
16	4	10
16	5	10
32	3	10
32	4	10
32	5	10

013-6x	014-6x 015-6x
023-6x	024-6x 025-6x



023-6x

16	3	10
16	4	10
16	5	10
32	3	10
32	4	10
32	5	10

013-6TTx	014-6TTx 015-6TTx
023-6TTx	024-6TTx 025-6TTx



015-6TTx

**TURBO
TERMINAL**

63	3	2
63	4	2
63	5	2
125	3	2
125	4	2
125	5	2

033-6xs	034-6xs 035-6xs
043-6xs	044-6xs 045-6xs



035-6xs

with flange 70 x 70 - fixing center 56 x 56

16	3	10
16	4	10
16	5	10
32	3	10
32	4	10
32	5	10

613-6x	614-6x 615-6x
623-6x	624-6x 625-6x



625-6x

with flange 70 x 70 - fixing center 56 x 56

16	3	10
16	5	10
32	4	10
32	5	10

613-6TTx	615-6TTx
624-6TTx	625-6TTx



625-6TTx

**TURBO
TERMINAL**

Minimum order quantity: 50 pcs.

